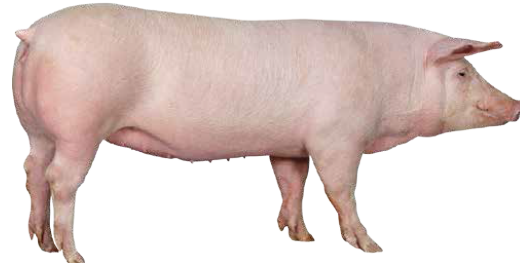




M2
Landrace; selected for maternal qualities with a focus on growth and muscle composition.

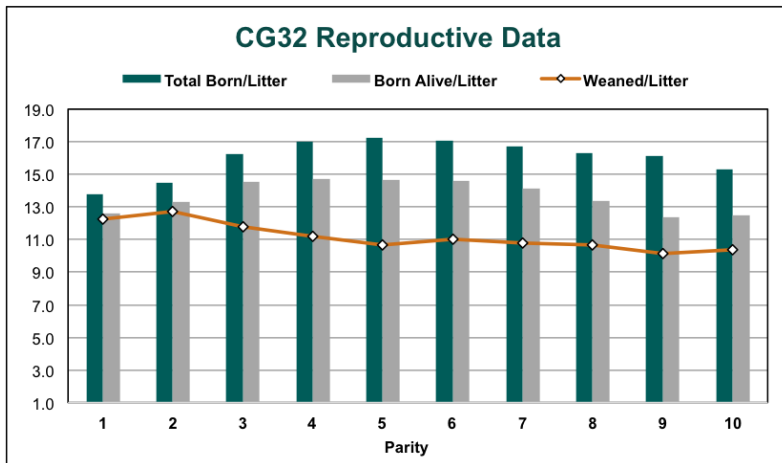


M3
Large White; selected for Hyper-prolificacy with exceptional maternal behavior.



CG32 Continuous Improvement for a Better PS Gilt

F1 female designed for mothering abilities including lifetime sow productivity, superior milking and easy to manage in group housing and crates.



Data	
Whole Herd	Total/Avg
Female Inventory	2969
Pigs Weaned/Mated Female/Year	28.5
Farrow Rate	89.4%
% Bred by 7 Days	92.9%
Wean to First Service Interval	5.4
Avg Total Born/Litter	15.3
Avg Born Alive/Litter	13.7
Avg Weaned/Litter	11.9
Avg Wean Age	22.0
Avg Sow Mortality	6.5%

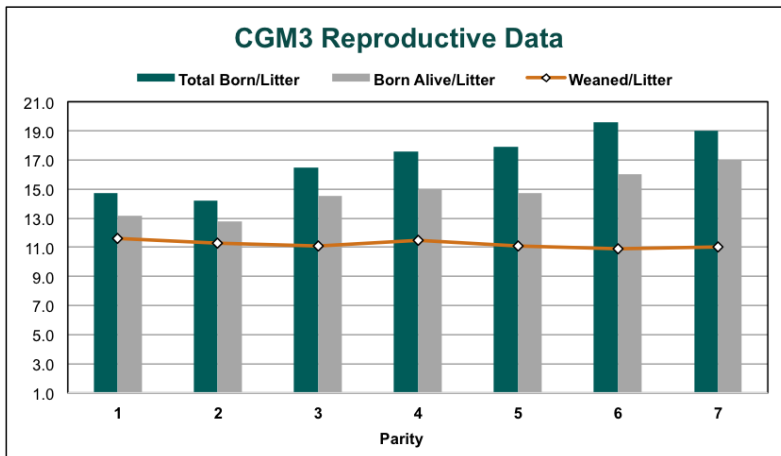
NOTICE: Actual results may vary based on production factors over which Choice Genetics has no control, including, but not limited to, management, animal handling, nutrition, environment and disease. While the information contained herein is presented in good faith and believed to be correct, Choice Genetics does not guarantee results from reliance on such information and disclaims all liability for any loss of damage arising from use of this information or to any products said information refers. Any warranties and remedies available are set forth in written contracts with Choice Genetics.

CG32M3V18-1



M3 GP

French origin Hyper-prolific Large White



Data	
Whole Herd	Total/Avg
Female Inventory	589
Pigs Weaned/Mated Female/Year	28.02
Farrow Rate	92.4%
% Bred by 7 Days	97.4%
Wean to First Service Interval	4.6
Avg Total Born/Litter	15.5
Avg Born Alive/Litter	13.7
Avg Weaned/Litter	11.4
Avg Wean Age	20.8
Avg Sow Mortality	6.40%

NOTICE: Actual results may vary based on production factors over which Choice Genetics has no control, including, but not limited to, management, animal handling, nutrition, environment and disease. While the information contained herein is presented in good faith and believed to be correct, Choice Genetics does not guarantee results from reliance on such information and disclaims all liability for any loss of damage arising from use of this information or to any products said information refers. Any warranties and remedies available are set forth in written contracts with Choice Genetics.

CG32M3V18-1